

Fashion sewing – just my style !

Fashion has many aspects and is constantly changing. Everyone who sews can turn their fashion ideas into reality. Trousers, blouse or jacket... elegant or sporty... anything is possible and is a unique expression of your fashion creativity.

Are you looking for a sewing machine that can help you create those fashions? Then you need to try the ClassicStyle fashion¹⁵²³ at your local Pfaff dealer.

It's a special limited edition machine with a modern design and all the sophisticated extras you need to become the fashion sewer you want to be.



www.pfaff.com

It's only available for a limited time, but you'll enjoy your ClassicStyle fashion¹⁵²³ for years to come! See your Pfaff dealer for more details about this special machine!

ClassicStyle fashion¹⁵²³ Stitch package at a glance

| | |
|--|--------------------------------|
| | Straight stitch |
| | Stretch triple straight stitch |
| | Zigzag stitch |
| | Stretch triple zigzag stitch |
| | Three-step zigzag stitch |
| | Honeycomb stitch |
| | Elastic blind stitch |
| | Blind stitch |
| | Overlock stitch |
| | Greek stitch, wide |
| | Closed overlock stitch |
| | Foundation elastic stitch |
| | Cover stitch |
| | Cross hem stitch |
| | Decorative stitch |
| | Decorative stitch |
| | Elastic closing seam |
| | Elastic closing seam |
| | Shell edging stitch |
| | Hem stitch |
| | Linen buttonhole |

Your authorized Pfaff dealer:

© 2006 VSM Group AB, Sweden. All rights reserved. All statements valid at time of printing. Printed in Sweden on environmentally friendly paper.

PFAFF

ClassicStyle fashion¹⁵²³ Fashion sewing – just my style!

NEW!
Special
Edition



1800383-26



German Engineering
Innovative Design

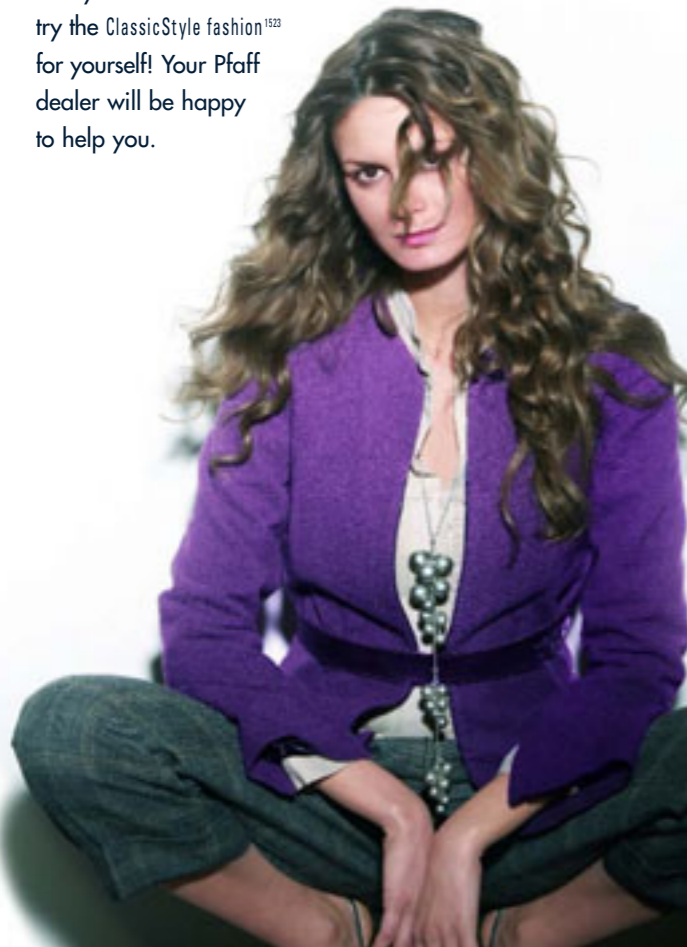


Sew what you like!

The ClassicStyle fashion¹⁵²³ is a sturdy, reliable sewing machine that will help you turn your fashion dreams into reality. No matter what fabric you use, the unique IDT™ guarantees absolutely even fabric feed from both the top and bottom and even, flawless stitching. That's important when you sew your own fashion creations.

You'll be amazed at the ease of use and the versatile sewing program gives you the flexibility you need.

Visit your local Pfaff dealer and try the ClassicStyle fashion¹⁵²³ for yourself! Your Pfaff dealer will be happy to help you.



ClassicStyle fashion¹⁵²³



21 Stitches
 20 utility stitches including 10 for stretch fabrics
 1 buttonhole

Only from Pfaff!
 You'll find sewing tips at
www.pfaff.com



IDT™

The ORIGINAL – only from Pfaff for over 35 years!

The ultimate in piecing perfection! Absolutely even fabric feed from both the top and the bottom.

Practical features – easy to use!



Stitches in the lid!
 All the stitches are clearly displayed inside the lid, including presser foot recommendations.



Great stitch selection.
 The right stitch for every sewing project!



Several layers?
 The high presser foot clearance makes it easy to position several layers or thick fabrics under the presser foot. The extra-strong motor provides constant needle piercing power.



Sew professional buttonholes without having to turn the fabric.



Many needle positions!
 For precise topstitching, without having to move the fabric. Perfect for sewing zippers in place.

ClassicStyle fashion¹⁵²³

All features at a glance!

- **Original IDT™ (Integrated Dual Feed)** – absolutely even fabric feed from both the top and bottom. Fine fabrics, several layers – no slipping! Only Pfaff has the original IDT™ built into the machine.
- **Great stitch selection.** The right stitch for every sewing project!
- **Many needle positions!** For precise topstitching without having to move the fabric.
- **Free-motion sewing position!** Use the special free-motion sewing position for the presser foot to get the highest clearance for your free-motion sewing.
- **Bobbin winding through the needle** is so easy! No need to rethread. Winding stops as soon as the bobbin is full.
- **Many accessories included:** Standard Presser Foot, Edge Guide/Quilting Guide, Clearview Foot, Blindhem Foot, Zipper Foot, Buttonhole Foot, seam ripper, needle box.
- **High presser foot clearance** to make room for heavy fabrics or several layers of fabric!
- **Carrying Case!** To protect your ClassicStyle fashion¹⁵²³ when not in use.
- **Only from Pfaff:** German engineering and innovative design!
- **Only from Pfaff! The ergonomic work surface!** With lots of room for sewing and an optimal view of your projects.
- **Constant needle piercing power** even when you sew slowly, with thick fabrics or through several layers of fabric.
- **Variable stitch width** up to 5.5 mm **and stitch length** up to 6.0 mm.
- **“Snap on”** – fast change for presser feet and needle plates – simply snap on and off!
- **Sew in reverse** to secure your seam.
- **Professional buttonholes** without having to turn the the fabric.
- **Sew buttons on** quickly with your ClassicStyle fashion¹⁵²³!
- **Extra-slim free arm** for working on tubular items like cuffs, trouser legs, necklines and more.
- **Easily accessible thread cutter is easy to reach** on the side of your ClassicStyle fashion¹⁵²³.
- **Two spool pins!** The main spool pin tilts up so that you can slide your thread on easily. The extra spool pin is available for twin needle sewing.
- **Illuminated sewing area!** The sewing lamp is easy on your eyes and in the perfect place to illuminate your sewing projects.

During sewing, the fabric is fed simultaneously from both the top and bottom. Absolutely nothing can slip when working with fine or heavy fabrics or even several layers. The original IDT™ is a real advantage when working with fashion fabrics.

It guarantees flawless stitching, even on long seams, thanks to the perfectly synchronized feed dogs.